

version

# 3.12.21

—Release Note—

## Overview

HR Business Cloud(HRBC) Version 3.12.21 has the following changes.

### 1 Add inter-field calculation function

System Administrators Settings required in part

From this version,inter-field calculation for number and currency type items is possible.  
For example,price include tax or sales calculation is possible now.

### 2 Changed the design of sidebar menu on list pages

To improve the usability of the menu,we changed design of sidebar menu(include refine、 mail、 dashboard) on left side of list pages.

### 3 Bug fix

- Fixed an issue that new window does not show after clicking 「Open in a new window」 button on 「Recently Accessed」 menu.
- Fixed an issue of crashes on chrome when click password reset link on login page.
- Fixed an issue of initial search value shows incorrectly after copy a menu.
- Fixed an issue of error message be showed after setting precision to 1 or 2 on a new currency type item.
- Fixed an issue of that the error message does not show even the number of characters is over when creating an option type item.

# Details

## 1 Add inter-field calculation function

System Administrators Settings required in part

### Summary

Inter-field calculation is possible by setting a mathematical expression to number type and currency type item. It is not only possible to do simple calculation like "+", "-", "×", "÷", but also possible to do calculation like the sum total, round and etc.

Alias : Sales.U\_SALARY(annual income)  
Sales.U\_PERCENT(percentage of fee)

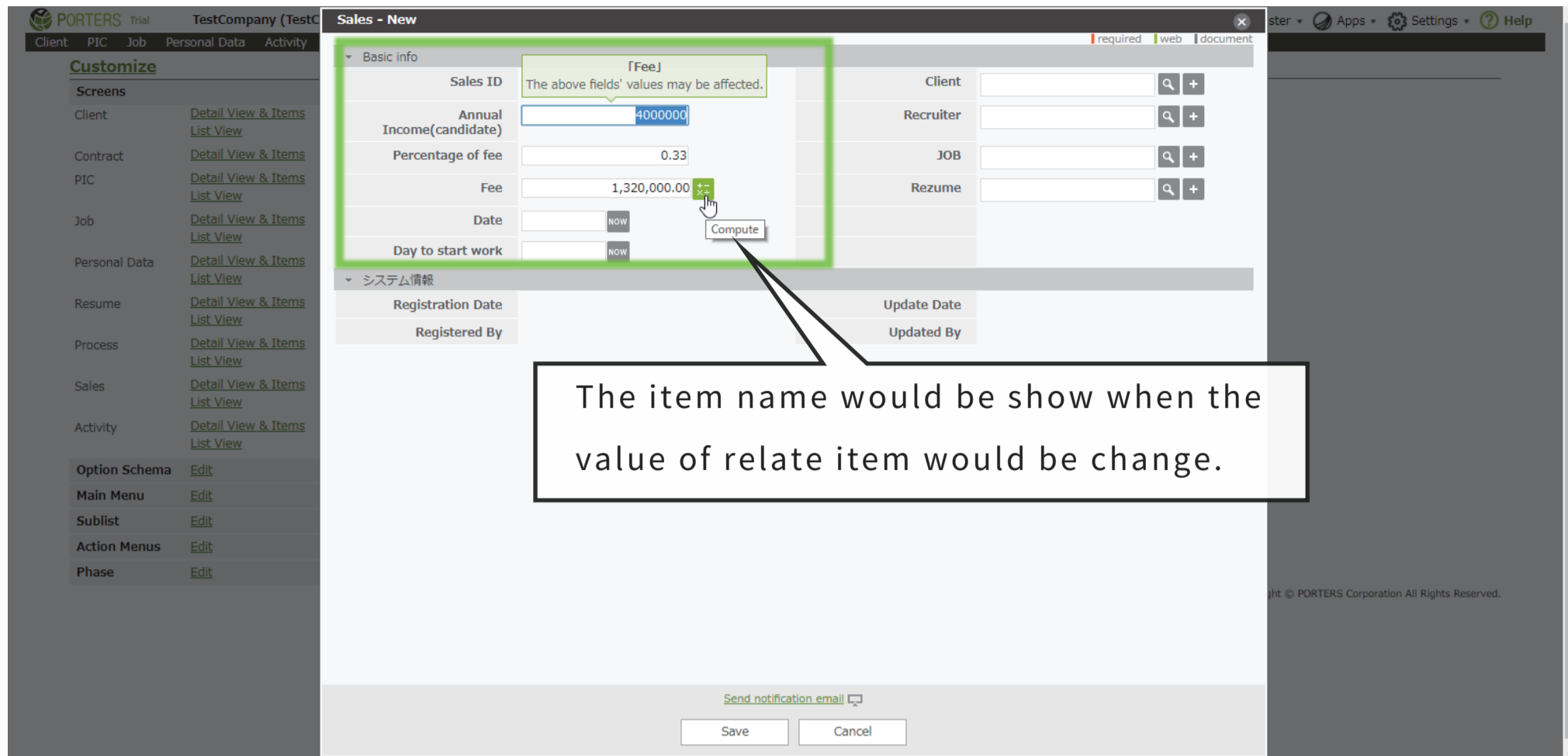
Mathematical Expression: Sales.U\_SALARY\*Sales.U\_PERCENT

It is necessary to set a mathematical expression on item's setting page. For example, this is a mathematical expression to calculate fee after candidate got an offer from client.

Annual Income(candidate): 4,000,000.00  
Percentage of fee: 0.33  
Fee: 1,320,000.00

Compute

Then click the compute button to get the result.



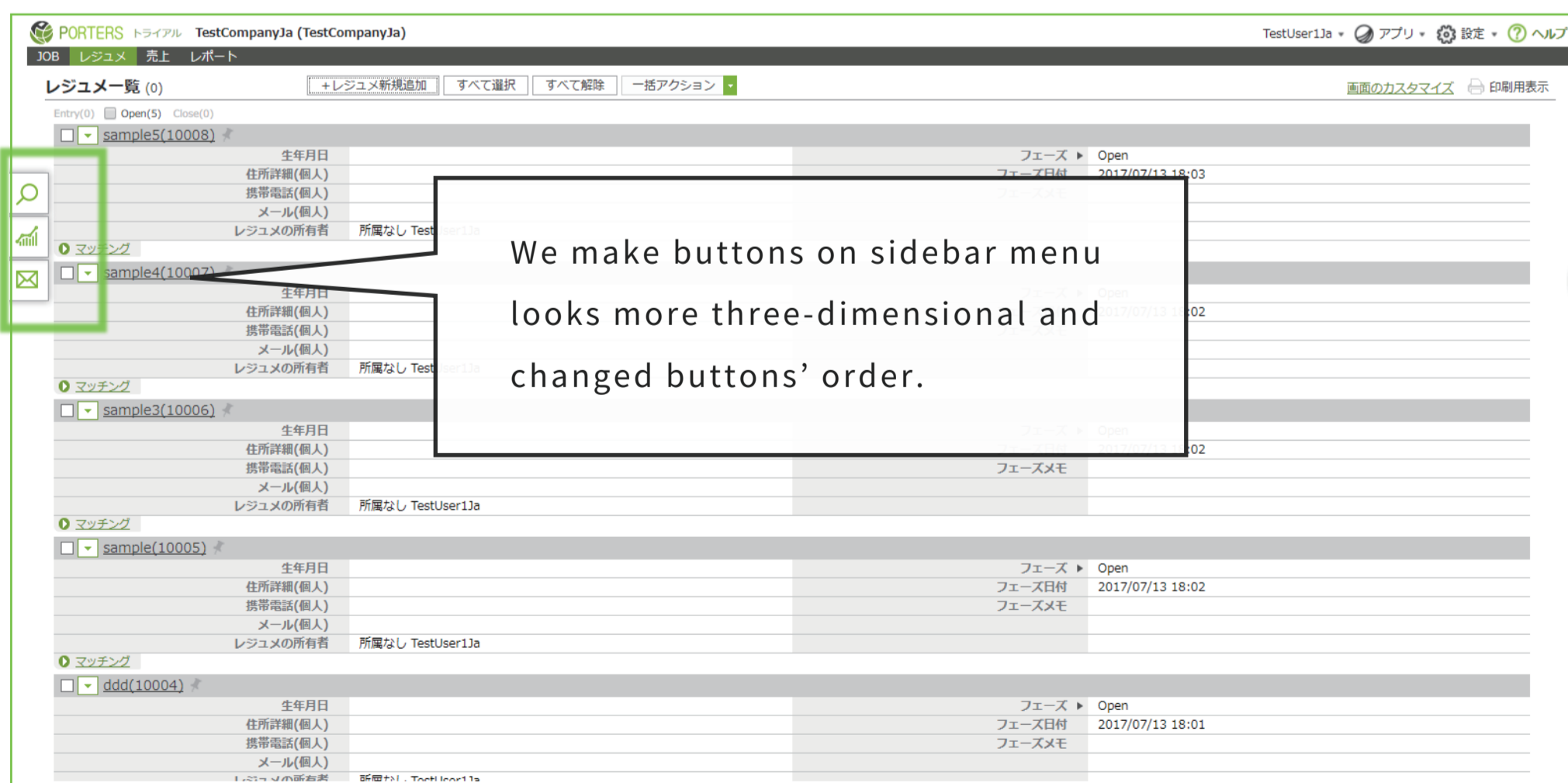
Samples of mathematical expression :

Addition	: Sales.U_XX1+Sales.U_XX2	Multiplication	: Sales.U_XX1*Sales.U_XX2
Minus	: Sales.U_XX1-Sales.U_XX	Division	: Sales.U_XX1/Sales.U_XX2
Percentage	: Sales.U_XX*0.08	Price including tax	: Sales.U_XX-(Sales.U_XX*0.08)

## 2 Changed the design of sidebar menu on list pages

### Summary

We changed the design of sidebar menu on list pages as following images.



The whole menu would be showed when you choose any button of it.  
An explanation would also be showed down to the cursor.

### 3 Bug fix

Contact us

## PORTERS Corporation

 **03-6432-9829**   
  **hrbc-support@porters.jp**  
**FAX 03-6432-9830**   
 **HP http://www.porters.jp**

Official Facebook Page: <http://www.facebook.com/Porters.PoCafe>